



## **ABC Enterprise Systems Inc (Americas)**

330 Madison Avenue  
2nd Floor  
New York  
NY 10017  
United States of America  
Tel: +1 646 428 3988  
Fax: +1 212 953 5144  
Email: [ussales@abcsystems.com](mailto:ussales@abcsystems.com)

## **ABC Enterprise Systems Ltd (Europe, Middle East & Africa)**

53 New Broad Street  
London  
EC2M 1JJ  
United Kingdom  
Tel: +44 (0)20 7382 5860  
Fax: +44 (0)20 7382 5864  
Email: [sales@abcsystems.com](mailto:sales@abcsystems.com)

[www.lanlicenser.com](http://www.lanlicenser.com)

## LanLicenser Inventory

LanLicenser's inventory component automatically finds and tracks all IT assets - both hardware and software - located within a company. Assets are recorded and stored within a database repository and subsequent new assets located are automatically added to this inventory.

### **How LanLicenser Inventory works**

Once LanLicenser has been installed it can automatically deploy client agents to any computer on your network that you require to be inventoried. The client agent will at scheduled intervals perform an inventory of the computer and upload this information to the site for reporting purposes. This information can also be used to meter or monitor access to specific software.

Configuration options are available which allow you to filter what you wish to scan. For example you can choose to scan just for hardware information, for operating systems files, or scan for registered applications only, etc.

The initial scan will gather all the inventoried data which have been selected through the configuration option, and subsequent scans will detect and record any changes made on the client computers.

### **Time taken to run software inventory scan**

The length of time taken by the inventory scan is determined by the configuration settings and the PC specification e.g. Number of hard disks, processor speed, number of files etc. Scans can be run concurrently on all PC's within the enterprise and does not increase the overall time taken.

The data gathering is done as a background task so as not to interfere with the normal operation of the computer being scanned. If the computer is heavily used then the inventory collection time will be extended.

### **Software Inventory**

The first step in achieving software license compliance is an understanding of the current situation. This means knowing what software is installed and where, and what is in use and by whom.

LanLicenser 4.1 includes an integrated software inventory component (*what is installed, and where*) and builds on the success of its metering capability (*what is in use and by whom*). Usage information is vital when trying to understand usage patterns of software, especially when replacing applications.

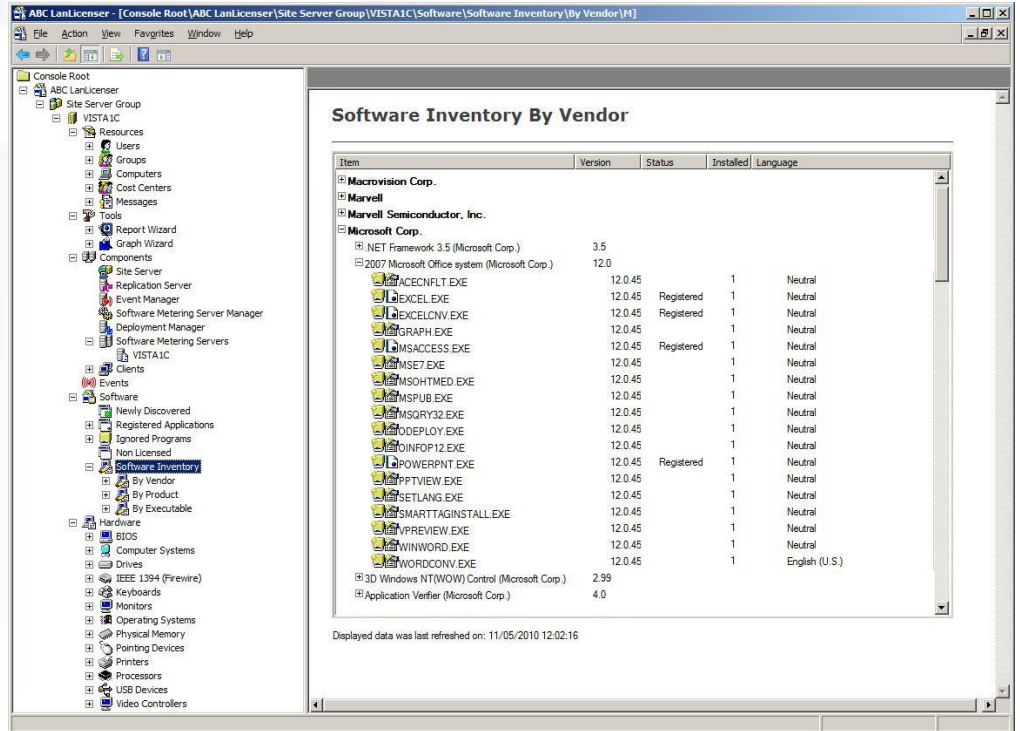
LanLicenser can run software inventory on your local LAN and across the WAN. LanLicenser software inventory collects and analyses software inventory from all workstations and can be scheduled to suit your convenience.





LanLicenser software inventory provides the following information:

- Software Publisher
- Software file information such as name, size, date, path, version
- Whether the application is an individual application or part of a suite
- Software inventory information on both servers and workstations
- Number of copies of each application installed



## Software Recognition

LanLicenser uses a highly accurate software recognition process to build an audit database of all the programs installed on the client workstations. It does not require you to install library updates; instead it automatically updates its own database tables, identifying information from each audited application. Any new application which is currently not in the database table, will still be 'recognised' and information provided e.g. the publisher, associated exe file, etc.

## Integration of software inventory information with the metering process

Once the inventory information has been collated, applications which are to be metered can be registered. The inventory process provides the number of copies of each application installed, and software metering will determine usage: i.e. how many copies are *actually* being used and by whom. License compliance can now be achieved without any unnecessary expenditure resulting from over-licensing.

Software metering also allows you to actively enforce license limits within your organization and restrict access to registered products. Desktops can be controlled, by identifying all unauthorized software downloads and monitoring the use of unauthorized software.





## Hardware Inventory

As well as being able to collect software inventory information, the inventory module can also scan the computer for hardware specific information.

This information can be used to help identify computers in the enterprise and also allow you to check the hardware specification of these computers e.g. to ensure that the computer will be able to run the latest version of a software product that is about to be rolled out.

The hardware inventory component collects information about the computer being scanned including (but not limited to) the following:

- Operating System: Service Pack, Product ID and Version.
- System: Manufacturer, Model and Serial Number.
- Computer: Name, MAC and IP address.
- BIOS: Manufacturer, Name and Version,
- Physical Memory; Total and Type.
- Drives: Hard Drives, DVD/CD-ROM and Removable Disks.
- Processor: Manufacturer, Type and Speed.
- Monitors & Video Controllers.
- IEEE 1394 (Firewire) Devices.
- USB Devices.
- Keyboards & Pointing devices.
- Printers.

The screenshot shows the ABC LanLicenser application window. The left pane displays a tree view of the inventory structure, with 'Disk Drives' selected under the 'Hardware' category. The right pane shows a table with 25 items, including manufacturer, model, size, and count for various disk drives.

Manufacturer	Model	Size	Count	
(Standard disk drives)	DELL Container 5CSI Disk Device	135.58GB	1	
(Standard disk drives)	SEAGATE ST318203LW SCSI Disk Device	16.95GB	1	
(Standard disk drives)	SEAGATE ST39103LW SCSI Disk Device	8.47GB	1	
(Standard disk drives)	TEAC USB H5-SD Card USB Device		1	
(Standard disk drives)	WIBU - CodeMeter-StickM USB Device	243MB	3	
	HDS72258	HDS722580VLAT20	76.68GB	2
	HDS72808	HDS728080PLA380	76.68GB	1
	HDS72808	HDS728080PLAT20 ATA Device	76.68GB	1
	Maxtor	Maxtor 6Y080L0	74.49GB	1
	Maxtor	Maxtor 6Y080L0	74.5GB	2
	Maxtor	Maxtor 6Y080L0	76.32GB	2
	Maxtor	Maxtor 86480D6	6GB	1
	Maxtor	Maxtor 88455D8	7.86GB	1
	QUANTUM	QUANTUM FIREBALLP LM10.2	9.49GB	1
	Samsung Electronics	SAMSUNG HM160HC	149.04GB	1
		ST34321A	4GB	1
		ST380011	74.52GB	1
		ST912082	111.78GB	1
	TEAC	TEAC USB H5-CF Card USB Device		1
	TEAC	TEAC USB H5-MS Card USB Device		1
	TEAC	TEAC USB H5-xD/SM USB Device		1
	WDC WD16	WDC WD1601ABYS-18C0A0 ATA Device	149GB	1
	WDC WD40	WDC WD400BD-75JMA0	37.25GB	4
	WDC WD80	WDC WD800BB-00JHC0 ATA Device	74.52GB	1
	WIBU -	WIBU - CodeMeter-StickM USB Device	243MB	17



Member of  
**FAST**  
Promoting the legal  
use of software



International Association  
of IT Asset Managers  
Provider Member  
[www.iaitam.org](http://www.iaitam.org)

## LanLicenser Inventory Reports

Accurate data is useless if it cannot be reported in a clear concise way. LanLicenser provides you with a number of Crystal reports which are easily accessible. The inventory reports provide you with information for both hardware and software components discovered during the audit.

The screenshot shows a report window titled 'Report' with a 'Hardware Summary' section. The summary is divided into four sub-sections: Operating System Summary, Computer Model Summary, Processor Summary, and Hard Disk Summary. Each sub-section contains a list of items with their respective counts.

Operating System Summary		
Microsoft Windows XP Professional (5.1.2600) - Service Pack 3		6
Microsoft(R) Windows(R) Server 2003, Standard Edition (5.2.3790) - Service Pack 2		6
Microsoft® Windows Vista™ Enterprise (6.0.6001) - Service Pack 1		1

Computer Model Summary		
Dell Inc.	Latitude D520 (AT/AT COMPATIBLE)	1
Dell Inc.	OptiPlex GX290 (AT/AT COMPATIBLE)	1
Microsoft Corporation	Virtual Machine (AT/AT COMPATIBLE)	6
System Manufacturer	System Name (AT/AT COMPATIBLE)	1
System Manufacturer	System Product Name (AT/AT COMPATIBLE)	1
Trigem Computer NETHERLANDS	A dyent Series (AT/AT COMPATIBLE)	1
VIA Technologies, Inc.	KM400-8235 (AT/AT COMPATIBLE)	2

Processor Summary		
AuthenticAMD AMD Athlon(tm) 64 Processor 3700+	2.210 GHz	1
AuthenticAMD AMD Athlon(tm) Processor	1.825 GHz	1
AuthenticAMD AMD Athlon(tm) XP 2500+	1.825 GHz	1
AuthenticAMD AMD Athlon(tm) XP 2600+	2.082 GHz	1
AuthenticAMD AMD Athlon(TM) XP 2800+	1.250 GHz	1
GenuineIntel Intel(R) Core(TM)2 CPU T7200 @ 2.00GHz	1.997 GHz	2
GenuineIntel Intel(R) Pentium(R) 4 CPU 2.80GHz	2.793 GHz	1
GenuineIntel Intel(R) Pentium(R) M processor 2.00GHz	2.001 GHz	6

Hard Disk Summary		
CBM Flash Disk-USB Device	502.03MB	7
HDS722560VLA T20	76.89GB	1
HDS728080PLA T20	76.89GB	1
Maxtor 6Y08L0	74.50GB	2
ST98823AS	74.53GB	1
Virtual HD	15.98GB	6
WD 2500JB External USB Device	232.88GB	1
WDC WD400BD-75JMA0	37.25GB	1
WDC WD800BB-00JHC0	74.53GB	1
WDC WD800BB-00JHC0 ATA Device	74.53GB	1

*More information on the LanLicenser Metering capabilities can be found within the following brochures:*

- LanLicenser Datasheet
- LanLicenser FAQs

### Further Information

For more information on LanLicenser 4.0 or to arrange a free trial please visit our web site [www.lanlicenser.com](http://www.lanlicenser.com) or contact our sales team:

**Americas, Asia, Pacific**

Tel: +1 646 428 3988

E-mail: [ussales@abcsystems.com](mailto:ussales@abcsystems.com)

**Europe, Middle-East, Africa**

Tel: +44 (0)20 7382 4150

E-mail: [sales@abcsystems.com](mailto:sales@abcsystems.com)



Licensing Solutions

