



# LanLicenser 4.0 LanLicenser

## Datasheet

### The Challenge

In the past five years, software assets have grown increasingly complex. Companies worldwide are continuously migrating to newer versions of Windows platforms and adopting e-commerce strategies that demand the latest applications while increasing the need for managing costs and securing the systems and information.

*Enterprises that fail to integrate software usage and inventory data to manage their software assets will over-buy licenses for 60 percent of their portfolio and be out of compliance on 30 percent of their portfolio.*

Gartner

From this complexity comes the concept of Software Asset Management (SAM): a set of policies, procedures, technologies and people within an organization all working towards enabling the organization to take full advantage of all of its software assets. A properly implemented SAM program optimizes an organization's software investment by maximizing the benefits of these resources while helping reduce costs and legal risks such as copyright infringement.

*Organizations with 1,000 to 3,500 users are saving between US\$500,000 and US\$1,200,000 annually in license fees by metering software.*

Gartner

With a structured control method, the enterprise can manage and influence Total Cost of Ownership (TCO), which in turn can enable the control and reduction of IT costs. As important as knowing "what applications are on my network?" is knowing "how often is each application actually being used, and by whom?"

### Introducing LanLicenser

#### Integrated Software inventory and Software usage Solution

LanLicenser provides an integrated software inventory and software metering solution. This enables you to effectively gain an understanding of your current situation by providing you with a view of what software is installed and where, and what is being used and by whom.

#### Reduce total cost of ownership through elimination of waste

By giving you complete visibility on actual software usage vs. the software installed, LanLicenser provides you with the information you need to make informed purchasing decisions and achieve license compliance at the right cost. Installations, upgrades and support can be planned based on actual usage of applications. This tighter adjustment of application portfolio to business needs will reduce the total ownership cost of your desktops dramatically.

#### Achieve license compliance without overpaying

Most firms control software compliance by maintaining an inventory of software installed on workstations and servers. They then purchase additional licenses as necessary to ensure compliance. The lack of information about actual usage inevitably results in unnecessary expenditure. With its integrated software inventory and advanced metering technology, LanLicenser provides you with the information you need to make informed purchasing decisions and achieve license compliance at the right cost.



#### ABC Enterprise Systems Inc (Americas)

2033 Gateway Place  
Suite 500  
San Jose  
California  
95110  
United States of America  
Tel: 1-408-266-1219  
Fax: 1-408-437-1201  
Email: [ussales@abcsystems.com](mailto:ussales@abcsystems.com)

#### ABC Enterprise Systems Ltd (Europe, Middle East & Africa)

53 New Broad Street  
London  
EC2M 1JJ  
United Kingdom  
Tel: +44 (0)20 7382 5860  
Fax: +44 (0)20 7382 5864  
Email: [sales@abcsystems.com](mailto:sales@abcsystems.com)

[www.lanlicenser.com](http://www.lanlicenser.com)





### **Control desktop usage reliably and cost-effectively**

In environments where security and compliance require the control of application usage, rigorous enforcement consumes significant internal IT resources. Furthermore, locking down the desktops increases support costs and can harm users' ability to carry out normal business tasks. LanLicenser proposes an innovative approach to the problem by preventing users from running prohibited software, whatever its source, without altering the desktop configuration. This approach offers 100% reliability at a very low cost.

### **Get better visibility on your costs**

LanLicenser provides you with the necessary information to allocate IT resource costs according to actual usage. This is the most effective way to achieve true cost transparency and implement activity-based costing, which leads to more accurate profit and loss accounts.

## **Why LanLicenser?**

### **Scalable architecture**

The scalability of LanLicenser has been designed from the ground up to scale to very large organizations (20,000+ workstations). Because of its 3-tier architecture there are actually no theoretical limits to the size of an implementation. The optimization of the communications keeps the network traffic generated by LanLicenser down to a minimum whatever the size of the infrastructure.

### **Information you can act upon**

Software asset management products can yield volumes of information that leave the administrator confused about what to do with this data. LanLicenser has been designed with cost optimization in mind. The predefined reports answer questions that IT managers often ask themselves, and allow the latter to undertake accurately targeted cost optimization initiatives supported by factual data.

### **Low administrative resource requirements**

Another common issue with software asset management products is the amount of administration effort required to keep them up-to-date. LanLicenser has been designed to be user-friendly, simple to use and requires minimal training. In large organizations the administration of products and licenses can be easily decentralized and LanLicenser can be configured to monitor essential software only, thus requiring minimal administration.

### **Integration capabilities**

Because it uses industry-standard relational databases like Microsoft SQL Server, it is very easy to import data such as user and cost centre information from other systems into LanLicenser and export usage data for example into other systems for cost allocation purposes. These integration capabilities make LanLicenser very valuable to large organizations for which replacing existing systems is often a costly and risky option.



# LanLicenser Features

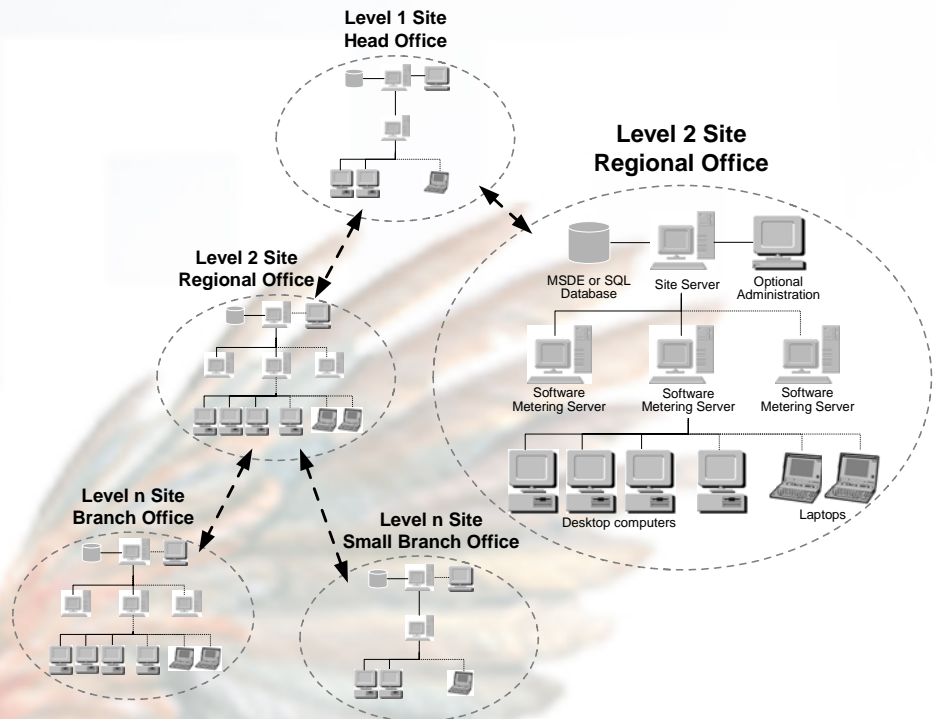
## Enterprise Performance and Scalability

LanLicenser uses an n-tier architecture with a Site Server at the top, Software Metering Servers in the middle and clients at the bottom. In this hierarchical approach, the software metering servers perform most of the processing, thus maximizing database speed and minimizing network traffic. The use of industry standard high transaction database technology such as Microsoft SQL Server ensures scalability.

*ABC LanLicenser's unique 3 tier architecture addresses all of the key software licensing issues that large organizations have been looking for including: world-wide license sharing, very low network traffic, scalability to any size, mobile support and low cost central administration capability.*

*International Data Corp (IDC)*

## LanLicenser Architecture: A Typical Organization



## Software Inventory

Upon installation, LanLicenser performs a software scan on all deployed clients. The information collated is sent to the site where the information can be viewed. Inventory can be scheduled. LanLicenser provides you with counts of real applications and those that have licensing implications.

LanLicenser software inventory provides the following information

- Software Publisher
- Software file information such as name, size, date, path, version
- Whether the application is an individual application or part of a suite
- Software inventory information on both servers and workstations
- Number of copies of each application installed
- Inventory can be run remotely within the network

Applications can be registered for metering and to determine usage.

## Active or Passive Metering

LanLicenser allows the network administrator to select product by product, whether to physically control access to programs or simply monitor and report their usage.





### Off-Line Metering

For those organizations which only want to collect usage information in the background, then it is also possible to configure LanLicenser in an offline mode. Information is collected from these offline clients and is uploaded to the server on a scheduled basis.

### Monitors Applications Running Across the Enterprise

LanLicenser tracks applications running on the network whether on file servers, Citrix Servers, Terminal Servers, client workstations, or even floppies and CDs at the workstations. LanLicenser also automatically detects all new applications being run on a client computer and can ensure that unauthorized applications are never run again.

LanLicenser detects all products that appear in the Windows task list (this includes the following file types EXE, SCR, COM, DLL, TMP, BIN, MOD, OCX) - depending upon the operating system.

### Auto trend analysis

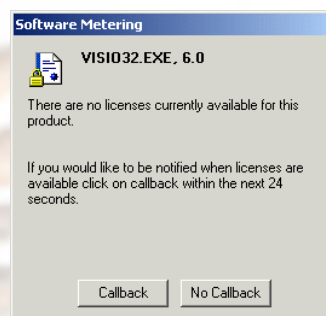
LanLicenser uses auto-trend analysis to automatically 'balance' licenses across licensing sites and thus ensures maximum cost savings. Detailed trend analysis enables accurate license requirement forecasting.

### Suite Licensing

Where users have suite licenses e.g. Microsoft Office, and also licenses for individual applications within that suite e.g. Microsoft Word, license usage is automatically optimized to give maximum usage for least cost.

### Automatic Call Back for Denied Users

If users are denied access to a product due to a lack of licenses, they can be automatically notified when a license becomes available on a guaranteed, prioritized basis.



### Inactivity Monitoring

LanLicenser can monitor inactivity and warn users if they have not been using a product for a definable time. If required, applications not in use can be closed down automatically and safely, releasing more licenses to the license pool.

### Registering Applications for Monitoring

Applications which are to be monitored can be registered easily in a number of different ways:

- From the list of applications that have been inventoried
- From 'Newly Discovered' view. This provides a listing of all new applications which have been recently run.
- By browsing to the application and selecting it.

### Client Deployment

Computers on the network can be selected, and clients remotely deployed. This ensures clients are kept up to date.

### Application Start-up Messaging

Sets new standards in ease of use and efficiency. It gives network administrators the ability to create informative custom messages that will be displayed when the end users launch applications e.g.

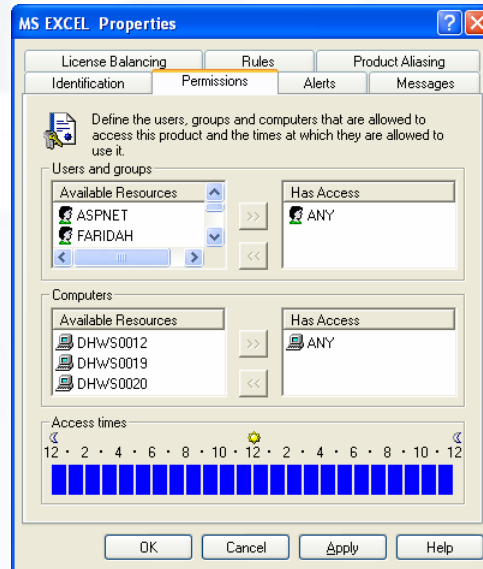
"This application is no longer supported. Please contact the Help Desk to be upgraded to the latest version" – can be displayed every time this unsupported application is run.





### Powerful Application Access Control

The network administrator can restrict access to any registered products anywhere on the network based on any combination of user name, workstation name, group membership, cost centre or time of day. Thus expensive CAD packages may be restricted to Engineering, games may be restricted to lunch time or excluded permanently, Internet access can be restricted to designated Web stations and unauthorized programs may be stopped from ever running again.



### Software Version Control

The administrator can define whether different versions of the same application are recognized as separate products or as one.

- Partial versioning will allow you to configure different versions of the same application to be treated as the same product e.g. if user ran MS Word 10 and MS Word 11 then it will be monitored as MSWord.
- Product aliasing allows different executables to be treated as one product e.g. MS Excel and Lotus 123 can both be registered as 'Spreadsheet Application'.
- Program Names Policy allows correct identification of an application even if the user attempts to rename the file e.g. if pinball.exe is restricted and the user renames it to word.exe, it will still be identified as pinball.exe and restricted.

### Extensive Reports and Graphing Options

A range of over 65 pre-configured reports are supplied as standard, making it easier than ever to start getting valuable information immediately. Reports provide both inventory and usage information. Reports cover a wide range of performance monitoring and measurement.



LanLicenser also includes separate Cost Centre reporting for easy interdepartmental billing. On-line viewing of information enables instant access to the database, and administrators can customize the many standard reports and graphs available. Reports can be exported to different data

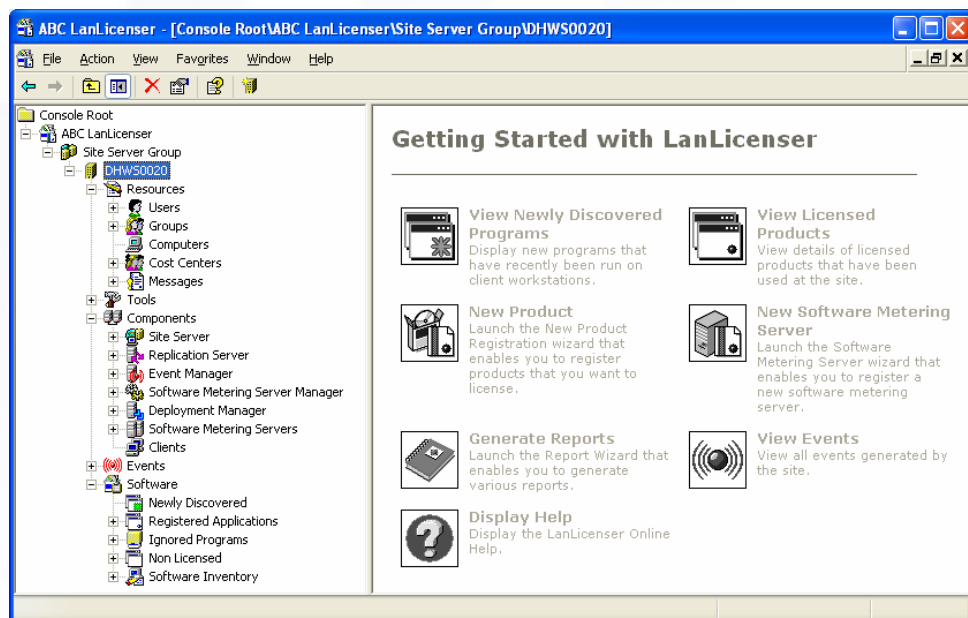




formats including Excel, dBase, Microsoft Word, Lotus 123, RTF or direct to e-mail systems. Additional reports can be easily created with the full version of Crystal Reports, available separately.

### Intuitive User Interface

The administration program uses industry standard Microsoft Management Console (MMC) and is user-friendly and intuitive. It requires minimal training and can be operated by non-IT staff. The Getting Started Taskpad allows the operator to see all essential functions at a glance.



### Integration with other Systems Management Products

LanLicenser is fully compatible with most leading vendors' Software Asset Management/Inventory products, through one of the LanLicenser report gateways. This allows metering and Inventory information to be combined into one report and can be used to establish what applications have been installed on the network but never used etc. *For more information please contact our sales and marketing staff.*



### Powerful Integration with Industry Standard Databases

LanLicenser integrates directly with powerful client/server databases such as Microsoft SQL Server, giving advantages of speed, security, robustness and the ability to integrate information with other applications. For smaller sites LanLicenser also includes and integrated database (Microsoft SQL Desktop Edition)

### TCP/IP (Winsock) Support

LanLicenser supports both TCP/IP and Named Pipes as possible communication protocols between the LanLicenser client and its Software Metering Server. This enables LanLicenser to operate in a wide range of network environments.

### NT Event Log Transfer

LanLicenser provides an integrated event management system which provides extensive reporting on events which are generated.





All LanLicensor events (e.g. client denials, low license count etc.) can also be sent to the NT event log. This makes a 'one-stop' event log available to the administrator that gives access to LanLicensor and NT events simultaneously. Using third party alerting software, the administrator can get e-mail or pager alerts from LanLicensor events.

## Enterprise Edition

LanLicensor Enterprise Edition is available for the very large multi-location or multi-national organizations. Enterprise Edition has been designed especially to enable administration and reporting for an entire organization however large or widely dispersed to be handled from a single central site. It provides further levels in the hierarchy to add parent-child site relationships to ensure that LanLicensor is scalable to even the largest global enterprise.

### Central administration

All reporting and license administration can be handled from a single central location thus minimizing the amount of time necessary to manage the largest network. Individual sites can optionally select to manage their licenses on a local basis if some applications are only relevant to that site.

### Auto Replication

License Data is replicated automatically across all sites and Software Metering Servers. Any site server in the hierarchy can be used to introduce new products within that site. LanLicensor ensures that these are then automatically distributed within this site and any child sites.

### Data collation

Information can be gathered and collated between sites in detailed or summarized format. Communication between sites can be scheduled to coincide with periods of low network traffic.

### Data Summarisation

It is possible summarise the usage information collected. This reduces the amount of information stored. For example, each time a product such as Microsoft Word is used, a detailed license usage record is created containing the users' name, the dates and times it was used between, and the computer it was used on. The summarized version would just indicate the maximum number of Microsoft Word sessions opened or denied over a specified period. The other information is discarded



## About ABC Enterprise Systems

A leading provider of software asset management software, ABC was founded and incorporated in 1991. Since its inception, the company's focus has been clear: to produce products that drive down the total cost of ownership (TCO) of the desktop. ABC has rapidly built a worldwide market for its license metering software. ABC's expertise in software management and metering has been recognized by the press, industry analysts, blue-chip customers, and by the Information Technology industry worldwide. ABC has built strategic partnerships with key IT vendors and software developers, including Microsoft, Tivoli (an IBM company), Hewlett-Packard and Hitachi Software. Many of these companies include our software and solutions as part of their own systems management offerings.

ABC places a strong emphasis on software development, quality, and testing. To deliver the quality that its customers demand, ABC's software research and development centre offers substantial testing and simulation facilities.

ABC's headquarters are located in London, United Kingdom. The company's Americas' office, ABC Enterprise Systems Inc, is located in San Jose, California.

Member of  
**FAST**  
Promoting the legal  
use of software

**Microsoft**  
**CERTIFIED**  
Partner

Licensing Solutions



Doc No: ABC02-LLDAT-01



© ABC Enterprise Systems 2008