



# LanLicenser 4.0 LanLicenser



## What's New in LanLicenser?

LanLicenser 4.0 builds on the success of earlier versions by introducing fundamental technology improvements that further increases its edge.

### Inventory support

LanLicenser now provides an integrated software inventory and software usage solution. LanLicenser software inventory collects and analyses software inventory from all workstations. Inventory can be scheduled to suit your convenience. LanLicenser software inventory provides the following information

- Software Publisher
- Software file information such as name, size, date, path, version
- Whether the application is an individual application or part of a suite
- Software inventory information on both servers and workstations
- Number of copies of each application installed
- Collect information interested in (can configure to choose which file types should be scanned)
- Inventory can be run remotely

A Software identification database has also been included to enable administrators to easily identify applications that have been launched

### New Installation Technology

LanLicenser now leverages the support of Microsoft Windows Installer making installing and configuring easier than ever.

### New user Interface

The LanLicenser user interface has been redesigned, using the Microsoft Management Console (MMC) framework. This not only makes administration of tasks easier, but also facilitates the integration of the LanLicenser user interface with other system management tools' user interfaces.

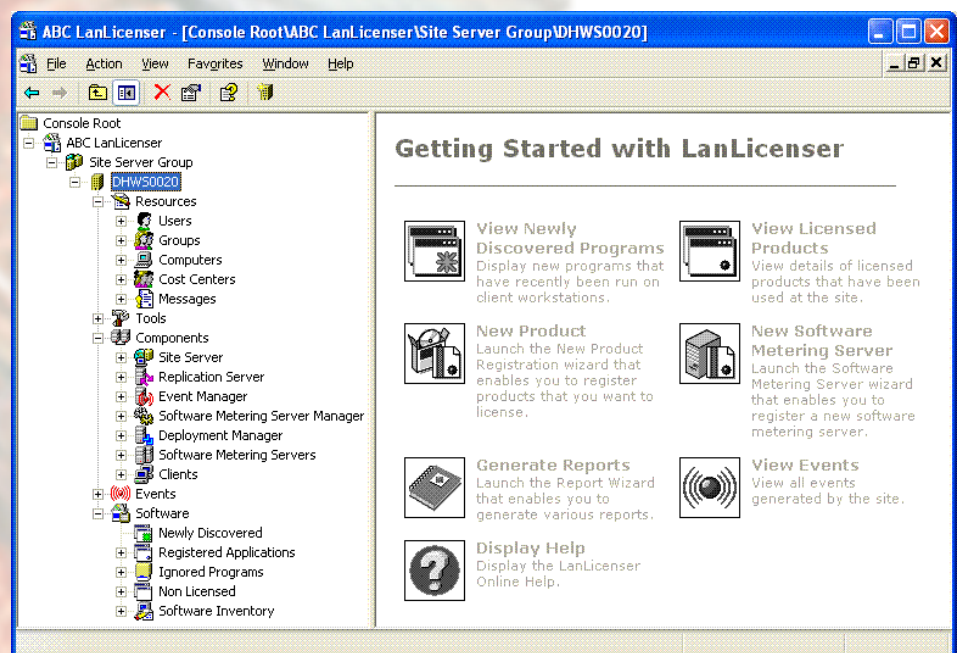
#### ABC Enterprise Systems Inc (Americas)

2033 Gateway Place  
Suite 500  
San Jose  
California  
95110  
United States of America  
Tel: 1-408-961-8708  
Fax: 1-408-437-1201  
Email: [ussales@abcsystems.com](mailto:ussales@abcsystems.com)

#### ABC Enterprise Systems Ltd (Europe, Middle East & Africa)

53 New Broad Street  
London  
EC2M 1JJ  
United Kingdom  
Tel: +44 (0)207 382 5860  
Fax: +44 (0)207 382 5864  
Email: [sales@abcsystems.com](mailto:sales@abcsystems.com)

[www.lanlicenser.com](http://www.lanlicenser.com)





The user interface is fully customizable and integrates with other administration tools e.g. Active directory, SQL Enterprise Manager Etc to allow administration from a single program.

LanLicenser requires minimal training and can be operated by non-IT staff. The Getting Started task pad allows the operator to see all essential functions at a glance.

New status views make it easier to check that everything is running smoothly. In addition, multiple views onto the same site or different sites can be attained.

Role-based security is now configurable for different levels of administration. All LanLicenser components can now produce Service Logs.

### **Report Wizard**

The report wizard can now be installed independently, and run as a stand alone tool. This gives you the flexibility to allow non-IT staff to view and produce reports without the need to have access to administrator options. Reports are grouped together for ease of use. New reports are available for inventory.

### **Improved Database Performance**

There are now two database options for both the Site Server and the Software Metering Servers:

- Microsoft SQL Desktop Edition (MSDE)
- Microsoft SQL Server

MSDE is supplied with LanLicenser and is very easy and quick to setup. For small to medium sized businesses which do not have SQL Server we recommend using MSDE at both the site and metering servers. For very large installations (over 1000 clients) we recommend using SQL Server for the site server, as it is a robust and scalable platform that will offer optimum performance.

New data nominalization and compression techniques have dramatically reduced the volume of data exchanged by clients, metering servers and site servers. As a result network bandwidth has been reduced.

### **Enhanced Software Metering Servers**

The software metering server has been re-designed to provide advanced functionality and reliability. The number of clients that can be supported by each Software Metering server has been significantly increased which reduces the number of servers required to support the enterprise thus reducing the TCO (total cost of ownership). In online mode (active mode or passive) each metering server can support up to 2000 clients, whereas in offline mode the number of clients supported has been increased to 10,000.

### **Upgraded Client support**

Client support has been updated to include full support for Windows XP and Windows Server 2003. Additional usage detail such as file path and file size are collected by each client, to make it easier to match inventory data to usage data. All the clients are now synchronized to the software metering server.

### **Deployment**

A remote deployment option has been added that can remotely configure and deploy the client agent on the desktop.





*More information on the LanLicenser Metering and inventory capabilities can be found within the following brochures:*

- LanLicenser 4.0 Datasheet
- LanLicenser 4.0 FAQs
- LanLicenser 4.0 Inventory Fact Sheet

**Further Information**

For more information on LanLicenser 4.0 or to arrange a free trial please visit our web site [www.lanlicenser.com](http://www.lanlicenser.com) or contact our sales team:

**Americas, Asia, Pacific**

Tel: +1 408 961 8708  
E-mail: [ussales@abcsystems.com](mailto:ussales@abcsystems.com)

**Europe, Middle-East, Africa**

Tel: +44 (0)207 382 4150  
E-mail: [sales@abcsystems.com](mailto:sales@abcsystems.com)

Member of  
**FAST**  
Promoting the legal  
use of software

**Microsoft**  
**CERTIFIED**  
Partner

Licensing Solutions

